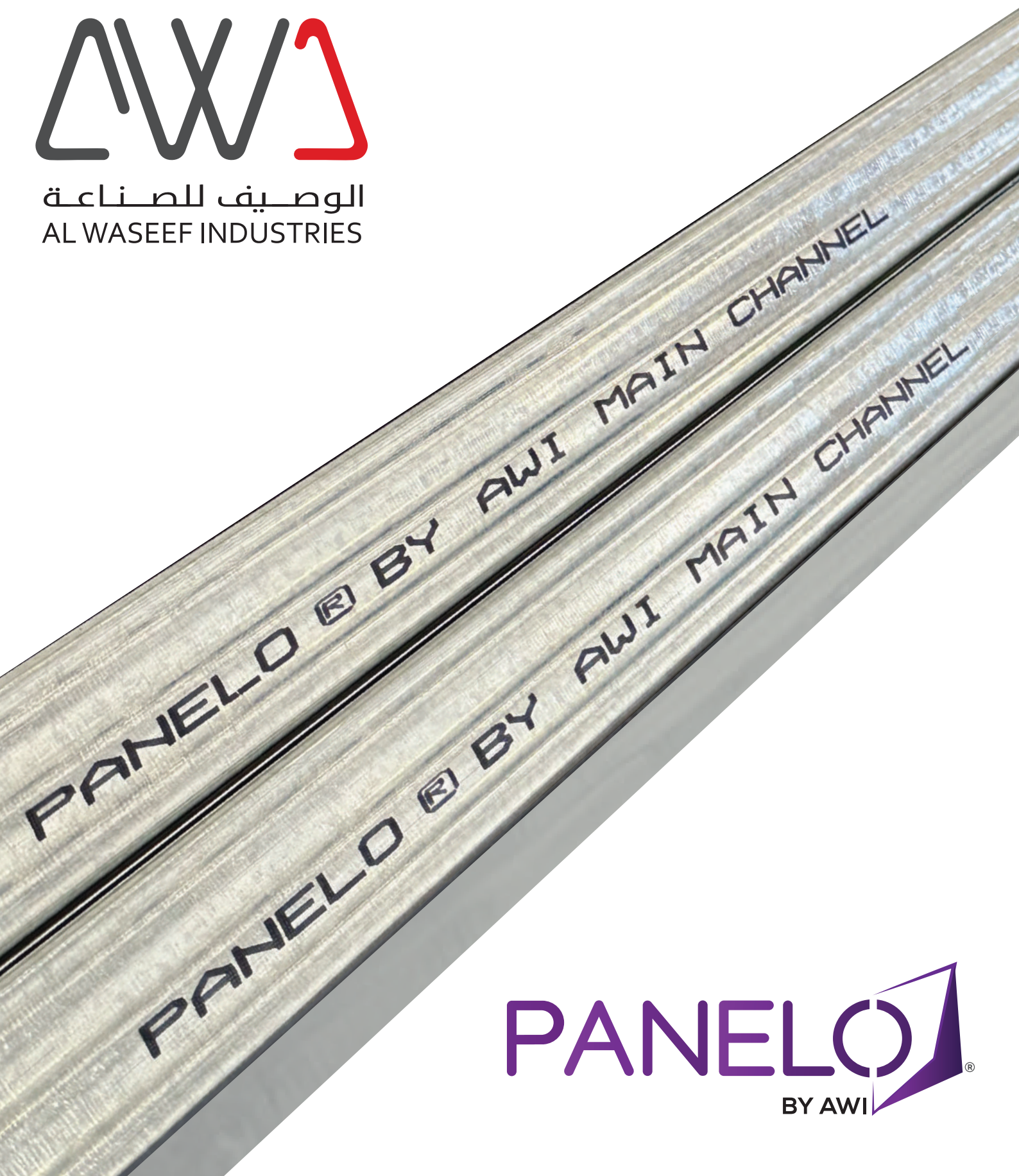




الوصيف للصناعة
AL WASEEF INDUSTRIES



PANELO®
BY AWI

Gypsum Ceiling System | Drywall Partition | Access Panels | Gypsum Ceiling Tiles
T Grid Suspension System

www.alwaseefind.com

ABOUT US

The Company manufactures a wide range of


1. PANELO Gypsum Ceiling Profiles
2. PANELO Drywall Partition Profiles
3. PANELO T-Grid Suspension Systems (T-15 & T-24)
4. PANELO Gypsum Ceiling Tiles 60 X 60 & 60 X 120
5. PANELO Ceiling Access Panels

Offering our customers a complete solution for all their interior gypsum ceiling and drywall partition requirements used in building construction projects in the UAE and GCC.

Al Waseef Industries commenced its manufacturing operations in 2007 in Dubai, U.A.E. Al Waseef Industries is a division of Al Waseef Group of companies, a large conglomerate operating in the region for the last 40 years. In 2018, Al Waseef Industries acquired Metex Metal Expansion Factory, a manufacturer of expanded metal products used in the building construction industry, with a large in-house coil slitting operation.


In 2022, Al Waseef Industries established a new 'state of the art' facility with the latest high tech machinery, to fulfil the growing demands of current and future development in the region. Located in Dubai Industrial City comprising of a fully purpose-built factory and corporate offices for Al Waseef Industries and Metex Metal Expansion factory.

T-24 (Metric/Imperial) System Components




MAIN TEE

Ref	H (mm)	W (mm)	Standard Thickness Upto	Standard Length	Material	Bundle
M24MT	38	24	0.35 mm	3600 mm	P.P.G.I.	25
I 24MT	38	24	0.35 mm	12'	P.P.G.I.	25



CROSS TEE 1.20


Ref	H (mm)	W (mm)	Standard Thickness Upto	Standard Length	Material	Bundle
M24CT (1.20)	28	24	0.35 mm	1200 mm	P.P.G.I.	50
I 24CT (4')	28	24	0.35 mm	4'	P.P.G.I.	50



CROSS TEE 0.60


Ref	H (mm)	W (mm)	Standard Thickness Upto	Standard Length	Material	Bundle
M24CT (0.60)	28	24	0.35 mm	600 mm	P.P.G.I.	75
I 24MT (2')	28	24	0.35 mm	2'	P.P.G.I.	75

T-15 (Metric/Imperial) System Components




MAIN TEE

Ref	H (mm)	W (mm)	Standard Thickness Upto	Standard Length	Material	Bundle
M15MT	38	15	0.35 mm	3600 mm	P.P.G.I.	40
I 15MT	38	15	0.35 mm	12'	P.P.G.I.	40



CROSS TEE 1.20

Ref	H (mm)	W (mm)	Standard Thickness Upto	Standard Length	Material	Bundle
M15CT (1.20)	28	15	0.35 mm	1200 mm	P.P.G.I.	80
I 15CT (4')	28	15	0.35 mm	4'	P.P.G.I.	80



CROSS TEE 0.60

Ref	H (mm)	W (mm)	Standard Thickness Upto	Standard Length	Material	Bundle
M15CT (0.60)	28	15	0.35 mm	600 mm	P.P.G.I.	123
I 15MT (2')	28	15	0.35 mm	2'	P.P.G.I.	123

Perimeter Angle



**W-SHADOW
ANGLE-9 MM
GROOVE (24 X 19)**

Ref	H (mm)	W (mm)	Standard Thickness Upto	Standard Length	Material	Bundle
WSA24X19(M)	24	19	0.45 mm	3000 mm	P.P.G.I.	45
WSA24X19(I)	24	19	0.45 mm	12'	P.P.G.I.	45



**W-SHADOW
ANGLE-19 MM
GROOVE (20 X 19)**

Ref	H (mm)	W (mm)	Standard Thickness Upto	Standard Length	Material	Bundle
WSA20X19(M)	20	19	0.45 mm	3000 mm	P.P.G.I.	30
WSA20X19(I)	20	19	0.45 mm	12'	P.P.G.I.	30

Note:
Standard Colour: RAL 9003. Other RAL colours are available upon request.



**L-ANGLE
(24 X 19)**

Ref	H (mm)	W (mm)	Standard Thickness Upto	Standard Length	Material	Bundle
LA24X19(M)	24	19	0.45 mm	3000 mm	P.P.G.I.	50
LA24X19(I)	24	19	0.45 mm	12'	P.P.G.I.	50

Gypsum Ceiling Tiles



SAFARI



DIAMOND



NEW SHADE (PLAIN)



ISLAMIC

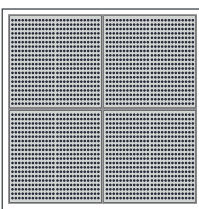
Al Waseef provides a wide range of Gypsum Ceiling Tiles, main patterns from our range are displayed above.

Gypsum Tile Sizes : 600 x 600 mm, 600 x 1200 mm

Thickness: 7 mm, 9 mm, 12 mm

Edges: Square Edge

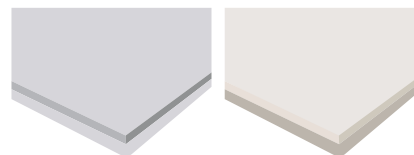
Aluminum Ceiling Tiles



**CONCEALED /
CLIP IN TYPE**

Ref	Ceiling Type	Thickness in mm	Size in mm	Material
AL 60 C	Clip – In	0.7 / 0.6 mm	600 x 600	Aluminum
AL 30 C	Clip – In	0.7 / 0.6 mm	300 x 300	Aluminum
AL 30 X 60 C	Clip – In	0.7 / 0.6 mm	300 x 600	Aluminum

*Other sizes and types are available upon request.



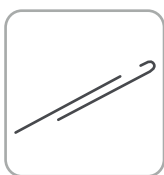
**EXPOSED / LAY-IN
TYPE (T- 24 &
T - 15 SYSTEM)**

Ref	Ceiling Type	Thickness in mm	Size in mm	Material
AL 60 L	Lay – In	0.6 / 0.7 mm	600 x 600	Aluminum
AL 30 L	Lay – In	0.6 / 0.7 mm	300 x 300	Aluminum
AL 30 X 60 L	Lay – In	0.6 / 0.7 mm	300 x 600	Aluminum

General accessories & system components



Adjustable spring clips



Hanging wires for
all ceiling systems



Preformed wire clip 38 mm
Galvanized mild steel wire



Ceiling Cartridge



Ceiling Clip with Nail



Gypsum Screws &
Steel Nails



Ceiling Wedge Anchor

Concealed Clip in Ceiling System



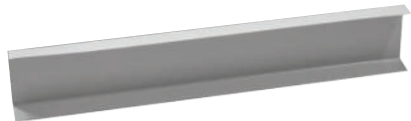
SPRING TEE

Ref	Dimensions A B		Standard Thickness Upto	Standard Length	Material	Bundle
35ST	35	29	0.45 - 0.50 mm	4000 mm	G.I.	10



**MAIN
CHANNEL**

Ref	Dimensions A B C			Standard Thickness Upto	Standard Length	Material	Bundle
38MC	12	38	12	0.40 to 1.50 mm	3000 mm	G.I.	20



EDGE TRIM

Ref	H(mm) A	W(mm) B	Standard Thickness Upto	Standard Length	Material	Bundle
ET38X15	38	15	0.50 mm	3000 mm	P.P.AL	20

Furring Ceiling System



**FURRING
CHANNEL**

Ref	Dimensions A B C			Standard Thickness Upto	Standard Length	Material	Bundle
35FC	35	22	68	0.40 to 0.90 mm	3000 mm	G.I.	25



**MAIN
CHANNEL**

Ref	Dimensions A B C			Standard Thickness Upto	Standard Length	Material	Bundle
38MC	12	38	12	0.40 to 1.50 mm	3000 mm	G.I.	20



L-ANGLE

Ref	Dimensions A B		Standard Thickness Upto	Standard Length	Material	Bundle
25LA	25	25	0.40 to 1.50 mm	3000 mm	G.I.	25

Drywall Partition System Components



**BOARD
PROTECTION
CHANNEL
(PERFORATED)**

Ref	Dimensions F1 W F2			Standard Thickness Upto	Standard Length	Material	Bundle
13BC	26	14	10	0.35 to 0.45 mm	3000 mm	G.I.	20



**BOARD
PROTECTION
CHANNEL (PLAIN)**

Ref	Dimensions F1 W F2			Standard Thickness Upto	Standard Length	Material	Bundle
13BC	26	14	10	0.35 to 0.45 mm	3000 mm	G.I.	20

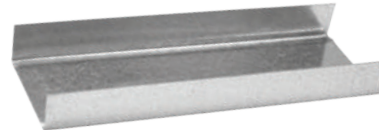
Drywall Partition System



STUD

Ref	Dimension F1 W F2			Standard Thickness (mm) Upto	Standard Length (mm)	Material	Bundle
48SD	34	48	32	0.40 to 0.90	3000	G.I.	12
50SD	34	50	32	0.40 to 0.90	3000	G.I.	12
60SD	34	60	32	0.40 to 0.90	3000	G.I.	12
63SD	34	63	32	0.40 to 0.90	3000	G.I.	12
70SD	34	70	32	0.40 to 0.90	3000	G.I.	12
73SD	34	73	32	0.40 to 0.90	3000	G.I.	12
90SD	34	90	32	0.40 to 0.90	3000	G.I.	12
92SD	34	92	32	0.40 to 0.90	3000	G.I.	12
98SD	34	98	32	0.40 to 0.90	3000	G.I.	12
123SD	34	123	32	0.40 to 0.90	3000	G.I.	8
148SD	34	148	32	0.40 to 0.90	3000	G.I.	8

Special Lengths are available upon request...



TRACK

Ref	Dimension F1 W F2			Standard Thickness (mm) Upto	Standard Length (mm)	Material	Bundle
50TK	25	50	25	0.40 to 0.90	3000	G.I.	12
52TK	25	52	25	0.40 to 0.90	3000	G.I.	12
62TK	25	62	25	0.40 to 0.90	3000	G.I.	12
65TK	25	65	25	0.40 to 0.90	3000	G.I.	12
72TK	25	72	25	0.40 to 0.90	3000	G.I.	12
75TK	25	75	25	0.40 to 0.90	3000	G.I.	12
92TK	25	92	25	0.40 to 0.90	3000	G.I.	12
94TK	25	94	25	0.40 to 0.90	3000	G.I.	12
100TK	25	100	25	0.40 to 0.90	3000	G.I.	12
125TK	25	125	25	0.40 to 0.90	3000	G.I.	8
150TK	25	150	25	0.40 to 0.90	3000	G.I.	8

Special Lengths are available upon request...

ACCESS PANELS

PANELO by AWI range consists of different types of ceiling access panels with the combination of powder coated extruded Aluminium and Gypsum board with special push to open system and hinges. We manufacture access panels with Fire resistant / Moisture resistant Gypsum boards in standard and custom sizes as per project requirements. The standard colour of aluminium used for access panel manufacturing is RAL-9016, Special colours also available upon request. PANELO by AWI access panels are available with brush (CAP-UK) and with out brush (TXP) as required. A strong support of hinges and locks in our access panels provide a rigid assembly to close precisely after every use.

No.	Installation	Standard Sizes (mm)	Custom Sizes (mm)
1.	Mark the area in which the panel has to be fixed. Cut the marked area required to suit the pre-installed panel.	200 x 200	400 x 600
2.	Each PANELO Access Panel is supplied pre assembled and pre-installed with a border panel of gypsum board (Standard Type).	300 x 300	600 x 800
3.	Arrange the ceiling finishes to suit the location of the access opening.	400 x 400	600 x 900
4.	If necessary, trim the outer border of the Access Panel to centre the opening.	450 x 450	600 x 1000
5.	Using Dry Wall Screws, fix the complete panel assembly to the furring system.	500 x 500	450 x 600
6.	The joints and edges of the fixed system has to be taped and finished in the normal manner.	600 x 600	500 x 600
7.	Paint the ceiling surface including the area of Access Panel.	600 x 1200	400 x 800

Note: Custom sizes / Double door / Triple door Access Panels available upon request.

APPLICATION

- Suitable for installation within drywall partitions and ceilings
- Ready for direct tiling on-site
- Prepared for surface finishing

PROPERTIES

- Corners of the frame are reinforced with non-corrosive galvanized steel angles
- Self-activating pressured spring locks
- Flush bonded gypsum board made of EN520 compliant Moisture - resistant boards
- Safety latch secured by galvanized angle at the inner side of frame

TECHNICAL DATA

Frames

Frames made from stable aluminium profile.
BS EN 755 - 9: 2016 Manufactured to: ISO 9001: 2015

Connecting Frame Parts

Galvanized steel

Material Inlay

Moisture resistant (MR) gypsum board.

Screws

Phosphated, rust-prevented, spike protected with cap.

Closing / Opening Mechanism

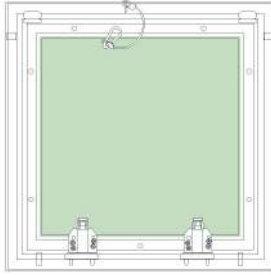
2 x Spring loaded galvanized steel locks with safety chain.

PANELO Access Panels

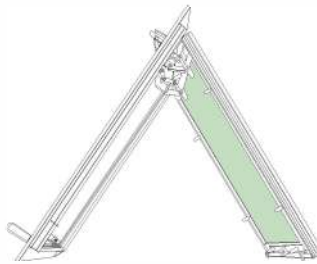
Standard Sizes
- 200 x 200 mm
- 300 x 300 mm
- 400 x 400 mm
- 450 x 450 mm
- 500 x 500 mm
- 600 x 600 mm
- 600 x 1200 mm

Actual Door Opening Size
- 195 x 195 mm
- 295 x 295 mm
- 395 x 395 mm
- 445 x 445 mm
- 495 x 495 mm
- 595 x 595 mm
- 595 x 1195 mm

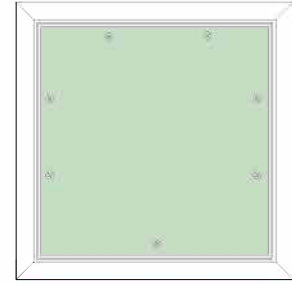
Customized Access Panels



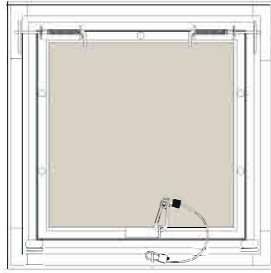
TXP WITH HINGES



SMART WITH HINGES



LAY-IN



CAP-UK SPECIAL



CAP-UK



TXP

