

REFERENCES



Istanbul Office
Burak Plaza
İstoç Oto Ticaret Merkezi
2. Cadde A2 Blok
No:1 Kat:13
Bağcılar / İstanbul / Türkiye

Factory
Yeni Mahalle 15. Sokak No:3
Lüleburgaz / Kırklareli / Türkiye
Phone: +90 444 37 40
Phone: +90 (288) 436 12 34
Fax: +90 (288) 436 13 63
Email: info@burak.com.tr

Scan Code for Catalogue



Instagram: @burakaluminum Facebook: /burak.aluminyum X: /burakaluminum

www.burak.com.tr

ARCHITECTURAL SYSTEMS



BM60 Insulated Hinged System

System Brochure
Technical Properties
System Details
References



History

It founded its first extrusion line in 1991 to produce aluminium profiles. In 1995, electrostatic powder coating unit and foundry was opened. Burak implemented its first export in 1996. And the second extrusion line was commissioned in 1997. Extrusion lines were revised, and the foundry's capacity was increased in 1998. Developing of architectural aluminium building systems was commenced in 2002. 1,400 and 2,000 tons of extrusion lines, anodization unit CNC mechanical processing machinery were commissioned, and the 1st phase construction of 12,500 sqm Luleburgaz plant was completed between 2003 and 2008. The foundation of Luleburgaz plant was completed in 2011. Aksan Aluminium; that is the first extrusion company joined the group in 2012. In 2013, total 85,000 sqm Luleburgaz plant with 65,000 sqm indoor space was completed and set into operation with 6 extrusion lines.

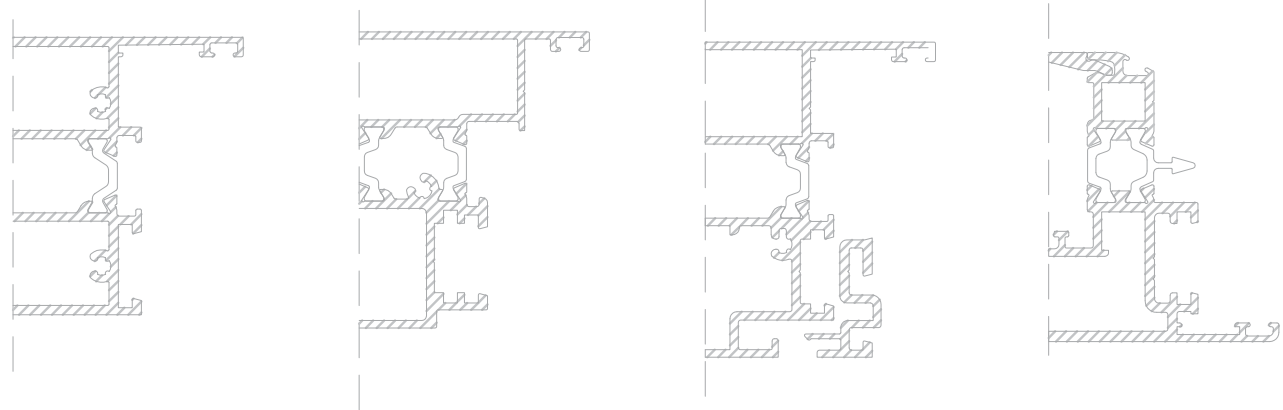
Product

Burak Alüminyum Industrial:
Burak Alüminyum also performs special alloy aluminium profile manufacture besides standard alloy extrusion profile. Besides serving industries such as automotive, aviation industry, heating-cooling, furniture promotions and rail systems which need qualified design from A to Z, it manufactures solar energy, semi-finished and finished products composed of aluminium such as caravan, automotive, industrial fridges, and radiators.

Burak Alüminyum Architectural Systems:
Burak develops architectural solutions. Manufacturing facade, doors and windows, sliding, office partition systems, handrail profiles and their compatible accessories, Burak also manufactures aluminium composite panels via its **BURAKBOND®** and **alu-linebond®** brands and exports these products more than 70 countries.



PRODUCT CONCEPT



BM 60 "Burak Menteşeli 60mm" is the new generation hinged system that presents all variations for door and window solutions together with high insulation and high impermeability performances.

ENERGY SAVING

Subjects of environment sensitivity and energy saving become important day by day. For this reason thermal insulation specifications was become on high level in BM 60. Even though Aluminium is cold material, it can be transformed reasonably insulator with developing material variability, design methods and new technologies. BM 60 is designed by focused performance according to actual requirements.

INNOVATIVE DESIGN

Structure is look like conventional with vertical corner and thick lines in design. Conversely the corners with huge radius preferred with thin profile sections, curly surface and pitched edges. But ease of use and manufacturing specifications did not abandoned.

EASE OF MANUFACTURING

Accessories of BM 60 was designed as logic of collective and harmonious with each other. So BM 60 has unique construction by ease of manufacturing

IMPROVABILITY

BM 60 was designed as smoothly developable system concept. In this way adaptation of new system solutions can be done quickly.

HIGH PERFORMANCE HINGED SYSTEM

TECHNICAL PROPERTIES

Frame Depth:	60 mm
Sash Depth:	68 mm
Profile Wall Thickness:	1,6 mm - 2 mm
Max. Glass Thickness:	44 mm
Insulation Bars:	16 mm
Thermal Insulation Value (uf):	2,27 W/m²K - 3,26 W/m²K

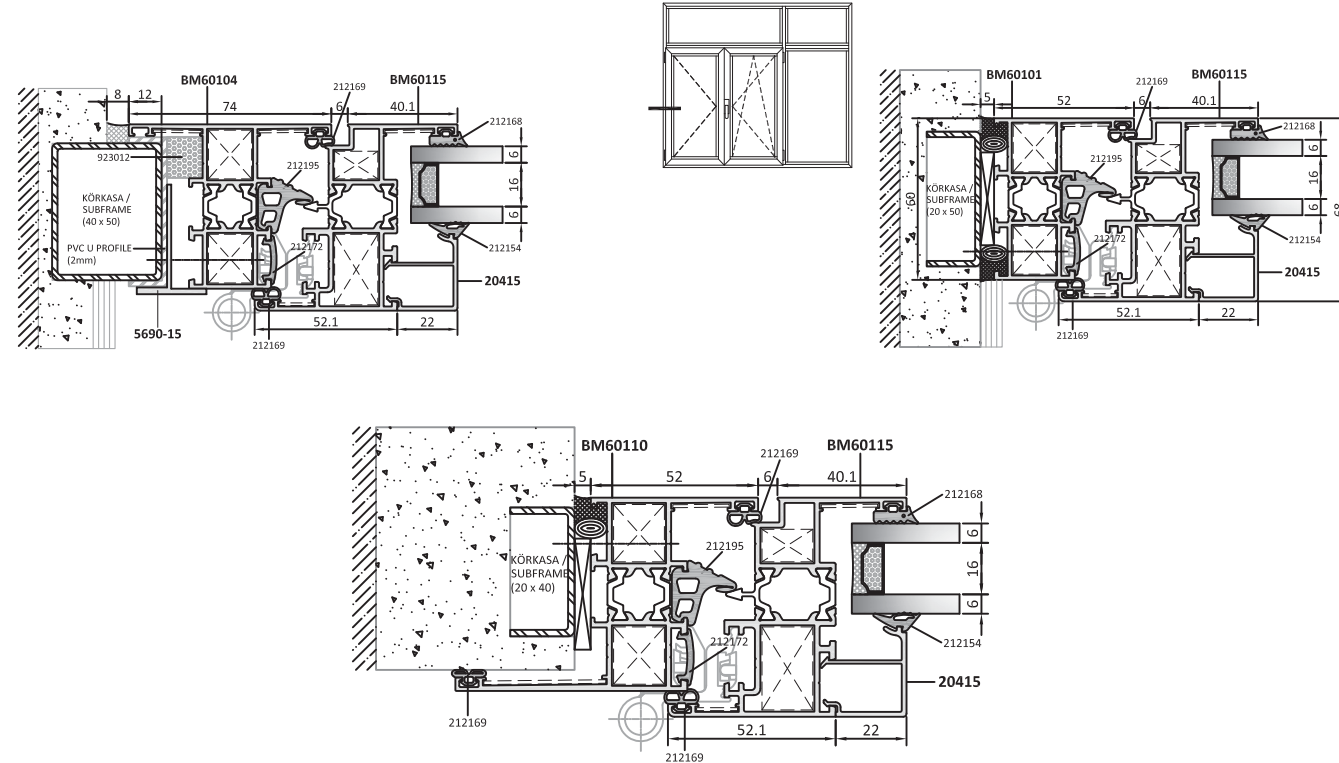
APPLICATION ALTERNATIVES

Inward Opening Step:	•
Outside Opening:	•
Inward Opening Flush:	•
Outside Opening Flush:	•
Hidden Vent:	•
Tilt & Turn:	•
Tilt & Slide:	•
Folding:	•

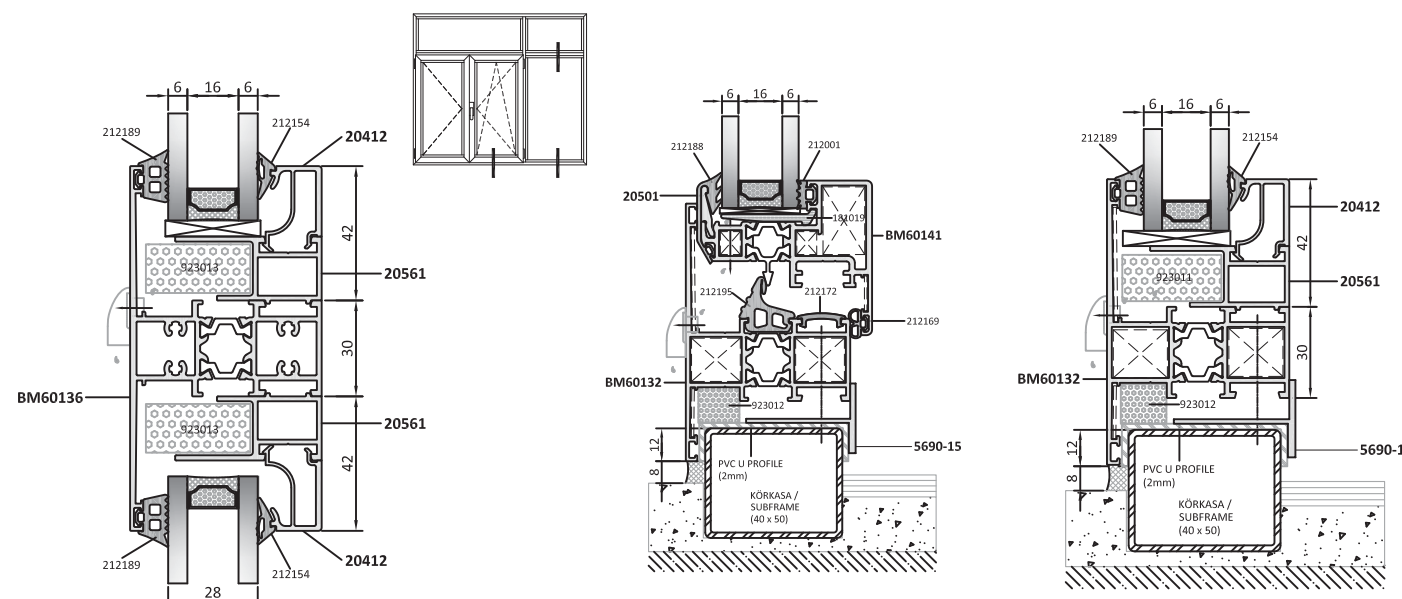
BM60



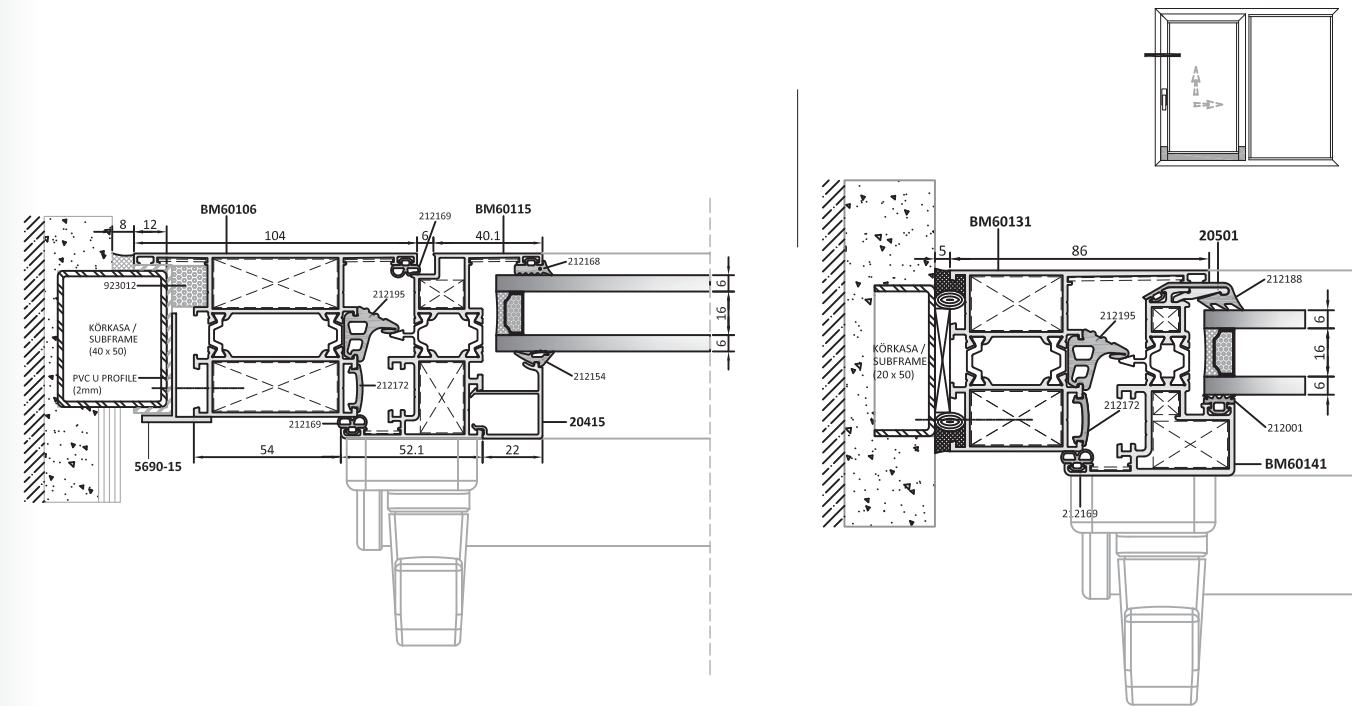
WINDOW DETAILS



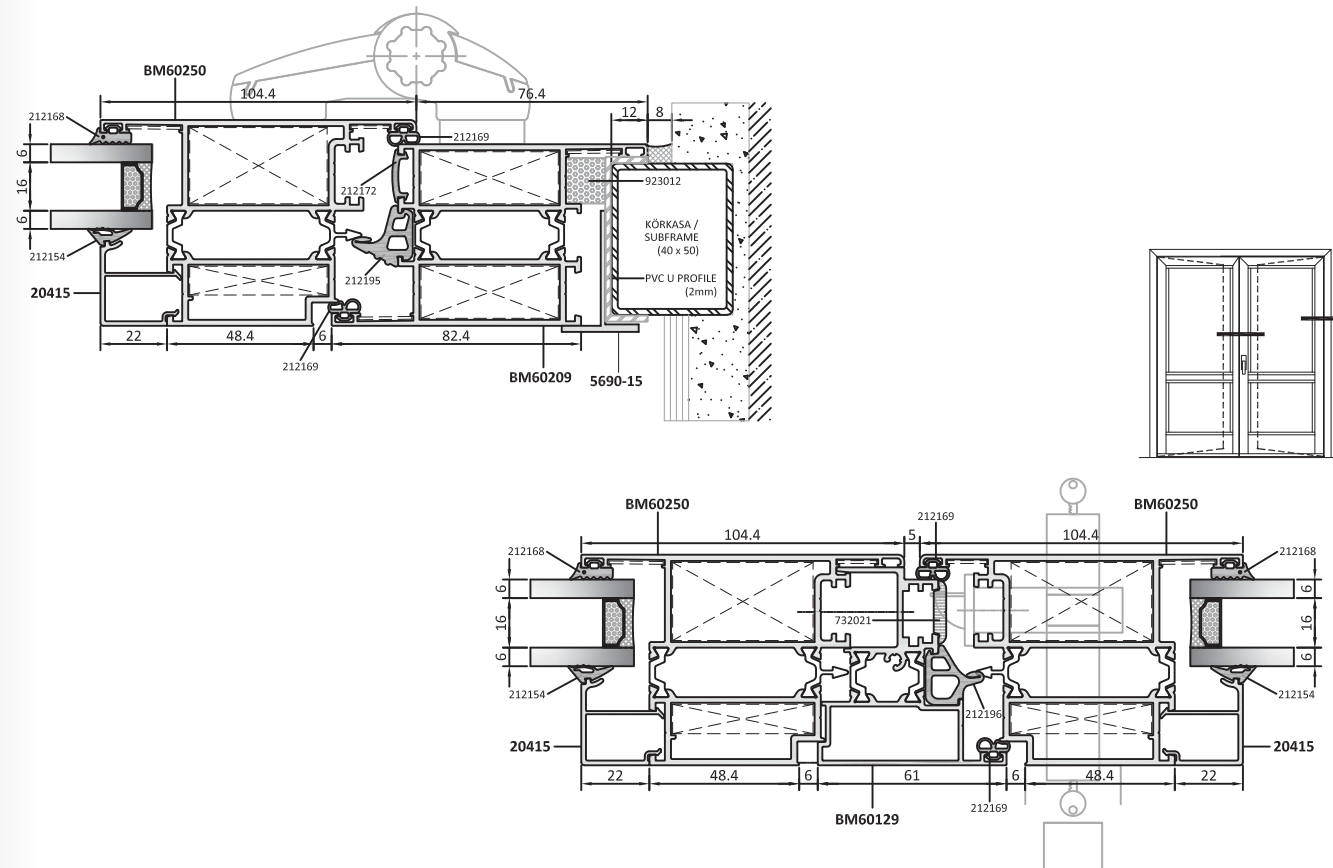
HIDDEN VENT WINDOW DETAILS



PARALLEL SLIDING DOOR DTAILS



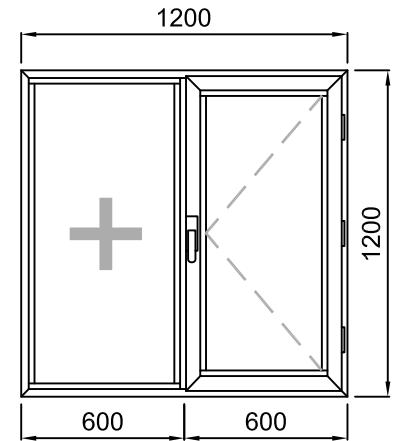
OUTWARD OPENING STEP DOOR DATAILS



TEST REPORT PERFORMANCE VALUES



Test Sample Dimensions



Genişlik / Width: 1200 mm

Opening Vent
Width: 600 mm
Height: 1200 mm

TEST REPORT RESULTS

AIR PERMEABILITY - EN 12207	<div><div>1 (150 Pa)</div><div>2 (300 Pa)</div><div>3 (450 Pa)</div><div>4 (600 Pa)</div></div>								
WATERTIGHTNESS - EN 12208	<div><div>2A (500 Pa)</div><div>3A (100 Pa)</div><div>4A (150 Pa)</div><div>5A (200 Pa)</div><div>6A (250 Pa)</div><div>7A (300 Pa)</div><div>8A (450 Pa)</div><div>9A (600 Pa)</div><div>E1500 (1500 Pa)</div></div>								
RESISTANCE TO WIND LOAD - EN 12210	<div><div>1 (400 Pa)</div><div>2 (800 Pa)</div><div>3 (1200 Pa)</div><div>4 (1600 Pa)</div><div>5 (2000 Pa)</div></div>								
DEFLECTION CRITERIA - EN 12210	<div><div>A ($<L/150$)</div><div>B ($<L/200$)</div><div>C ($<L/300$)</div></div>								
ACOUSTIC PERFORMANCE - EN 10140-2 EN 717-1	Rw (C; Ctr) = <u>37</u> (-1,9; -4,8) dB								
STATIC TORSION - EN 13115	350 <u>N</u>								

** For further information, please ask for the test reports.