

## BI-FOLD SLIDING SYSTEM

### Folding Door System

- In the folding door systems of existing companies, the lower, upper and side case profiles can be in different designs. In the PHI77 system, the same case profile can be used in all details. Can be combined in 45 degree and 90 degree case.
- Alternatively, non-threshold frame details.
- Carrying bearings operation in the lower frame.
- Both inward and outward can be opening.
- The door leaf can be made with or without a lock.
- Corner pin connection can be used on the frame and vent, also corner cleats can be used.



**Istanbul Office**  
Burak Plaza  
İstoç Oto Ticaret Merkezi  
2. Cadde A2 Blok  
No:1 Kat:13  
Bağcılar / İstanbul / Türkiye

**Factory**  
Yeni Mahalle 15. Sokak No:3  
Lüleburgaz / Kırklareli / Türkiye  
Phone: +90 444 37 40  
Phone: +90 (288) 436 12 34  
Fax: +90 (288) 436 13 63  
Email: info@burak.com.tr

/burakaluminum /burak.aluminyum /burakaluminum

[www.burak.com.tr](http://www.burak.com.tr)

## ARCHITECTURAL SYSTEMS



# BK77

Bi-Fold Sliding  
System

• **System Brochure**  
**Technical Properties**  
**System Details**  
**References**



### History

It founded its first extrusion line in 1991 to produce aluminium profiles. In 1995, electrostatic powder coating unit and foundry was opened. Burak implemented its first export in 1996. And the second extrusion line was commissioned in 1997. Extrusion lines were revised, and the foundry's capacity was increased in 1998. Developing of architectural aluminium building systems was commenced in 2002. 1,400 and 2,000 tons of extrusion lines, anodization unit CNC mechanical processing machinery were commissioned, and the 1st phase construction of 12,500 sqm Luleburgaz plant was completed between 2003 and 2008. The foundation of Luleburgaz plant was completed in 2011. Aksan Aluminium; that is the first extrusion company joined the group in 2012. In 2013, total 85,000 sqm Luleburgaz plant with 65,000 sqm indoor space was completed and set into operation with 6 extrusion lines.

### Product

**Burak Alüminyum Industrial:**  
Burak Alüminyum also performs special alloy aluminium profile manufacture besides standard alloy extrusion profile. Besides serving industries such as automotive, aviation industry, heating-cooling, furniture promotions and rail systems which need qualified design from A to Z, it manufactures solar energy, semi-finished and finished products composed of aluminium such as caravan, automotive, industrial fridges, and radiators.

**Burak Alüminyum Architectural Systems:**  
Burak develops architectural solutions. Manufacturing facade, doors and windows, sliding, office partition systems, handrail profiles and their compatible accessories, Burak also manufactures aluminium composite panels via its **BURAKBOND®** and **alu-linebond®** brands and exports these products more than 70 countries.

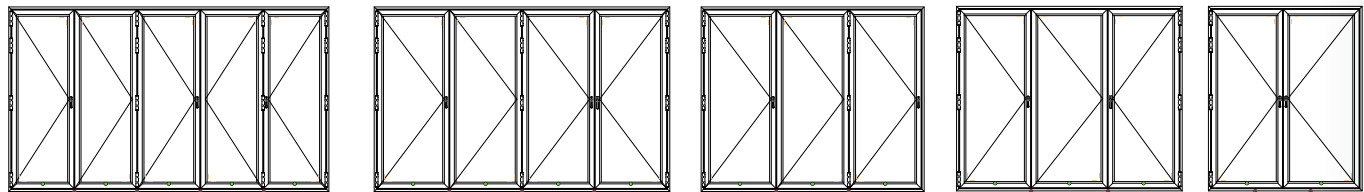
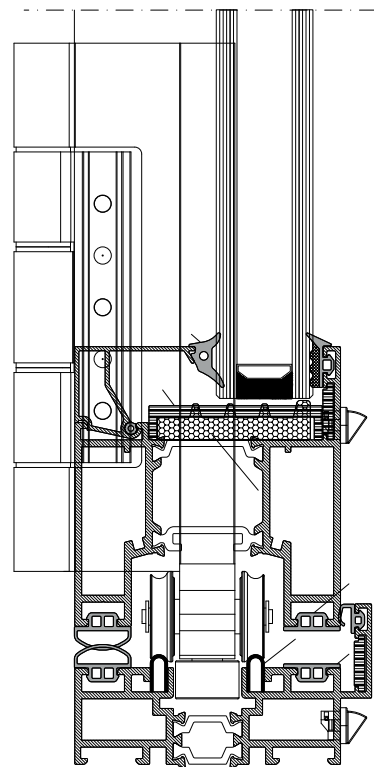
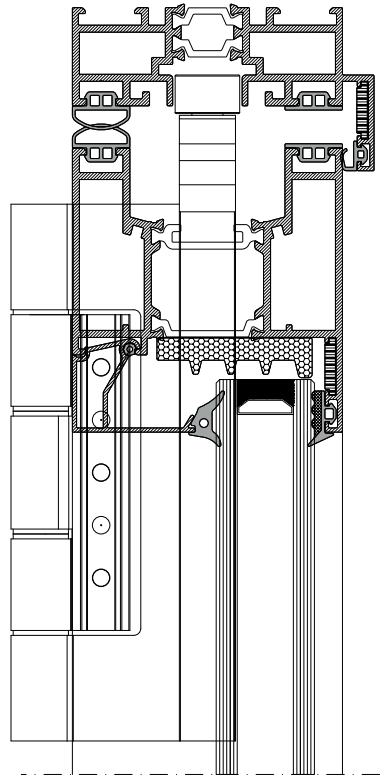




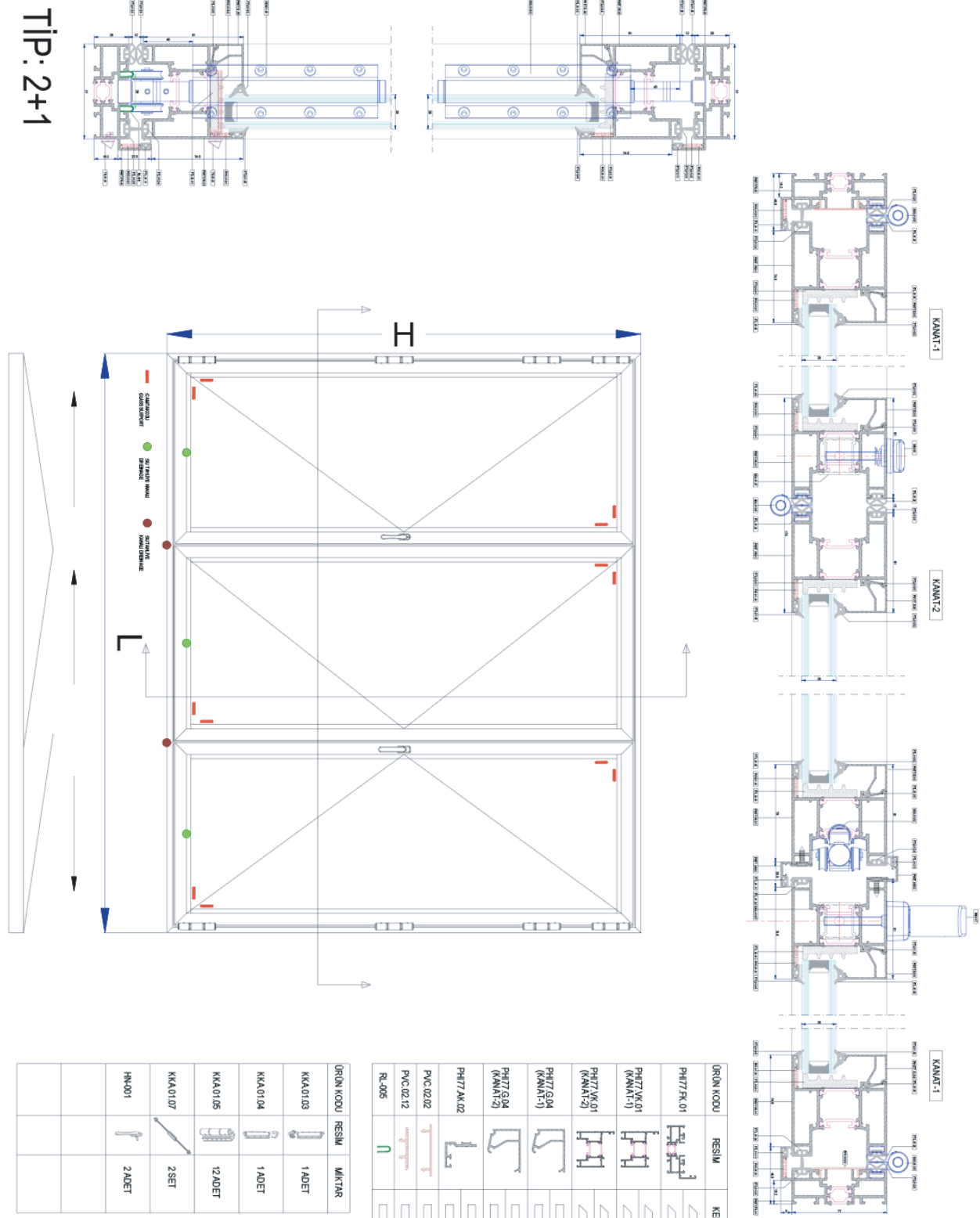
## BI-FOLD SLIDING SYSTEM



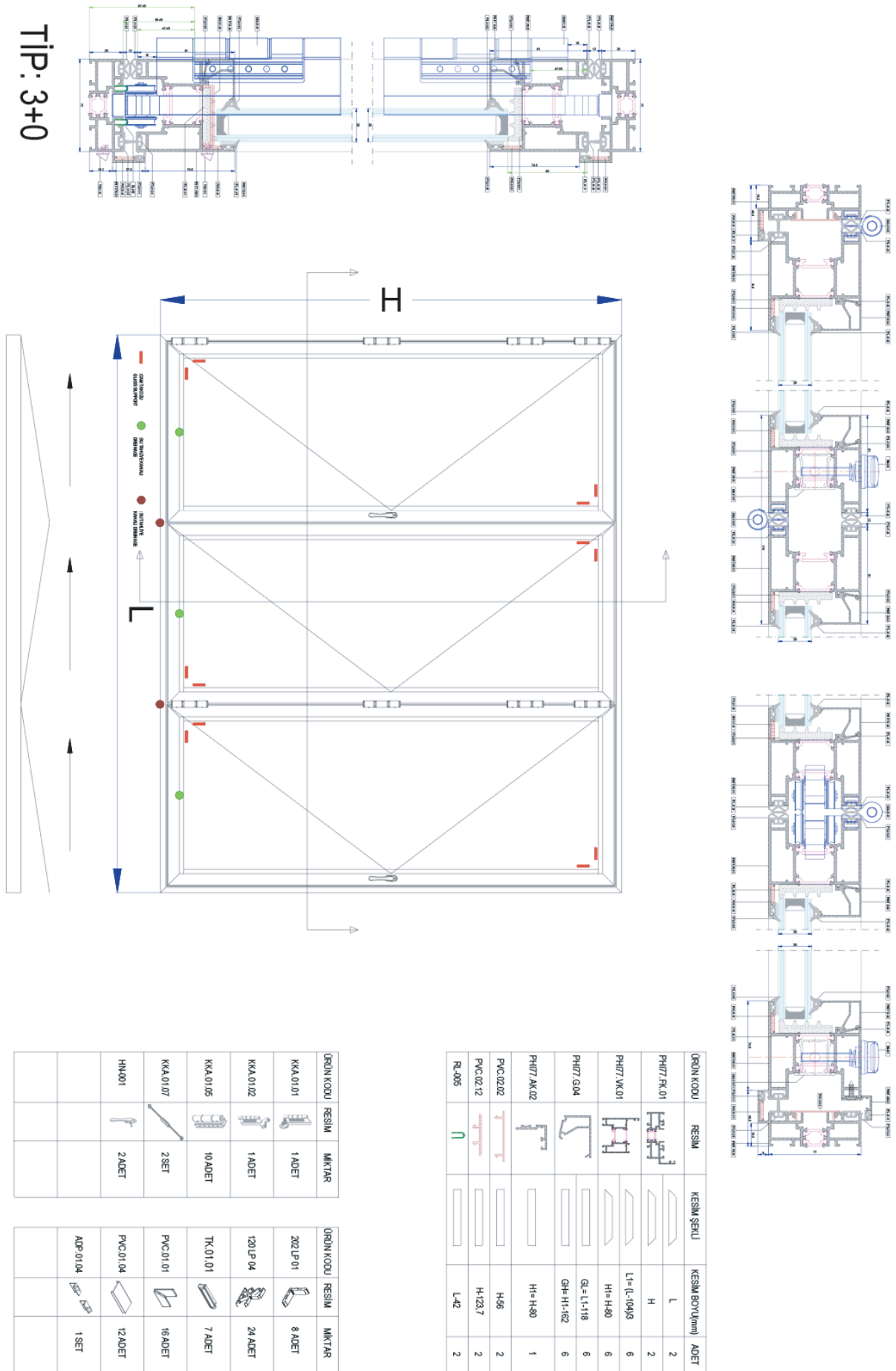
<b>Kasa Derinliği</b> Frame Depth	86 mm
<b>Kanat Derinliği</b> Vent Depth	77 mm
<b>Kanat Genişliği</b> Vent Width	81 mm
<b>Cam Kalınlığı</b> Glass Thickness	15 mm~54 mm
<b>Bariyer Genişliği</b> Barrier Width	Kasa : 20mm Kanat : 32 mm
<b>Maks. Kanat Yüksekliği</b> Max. Vent Height	3,5 m (5,0 m)
<b>Maks. Kanat Genişliği</b> Max. Vent Widh	1,2 m
<b>Maks. Kanat Sayısı</b> Max. Number of Vent	7
<b>Maks. Kanat Taşıma Kapasitesi</b> Max. Vent Capacity	120 kg
<b>Maks. Kanat Birleşim Al. Yüzey</b> Max Vent Combination Al. Surface	174 mm



## BI-FOLD SLIDING SYSTEM

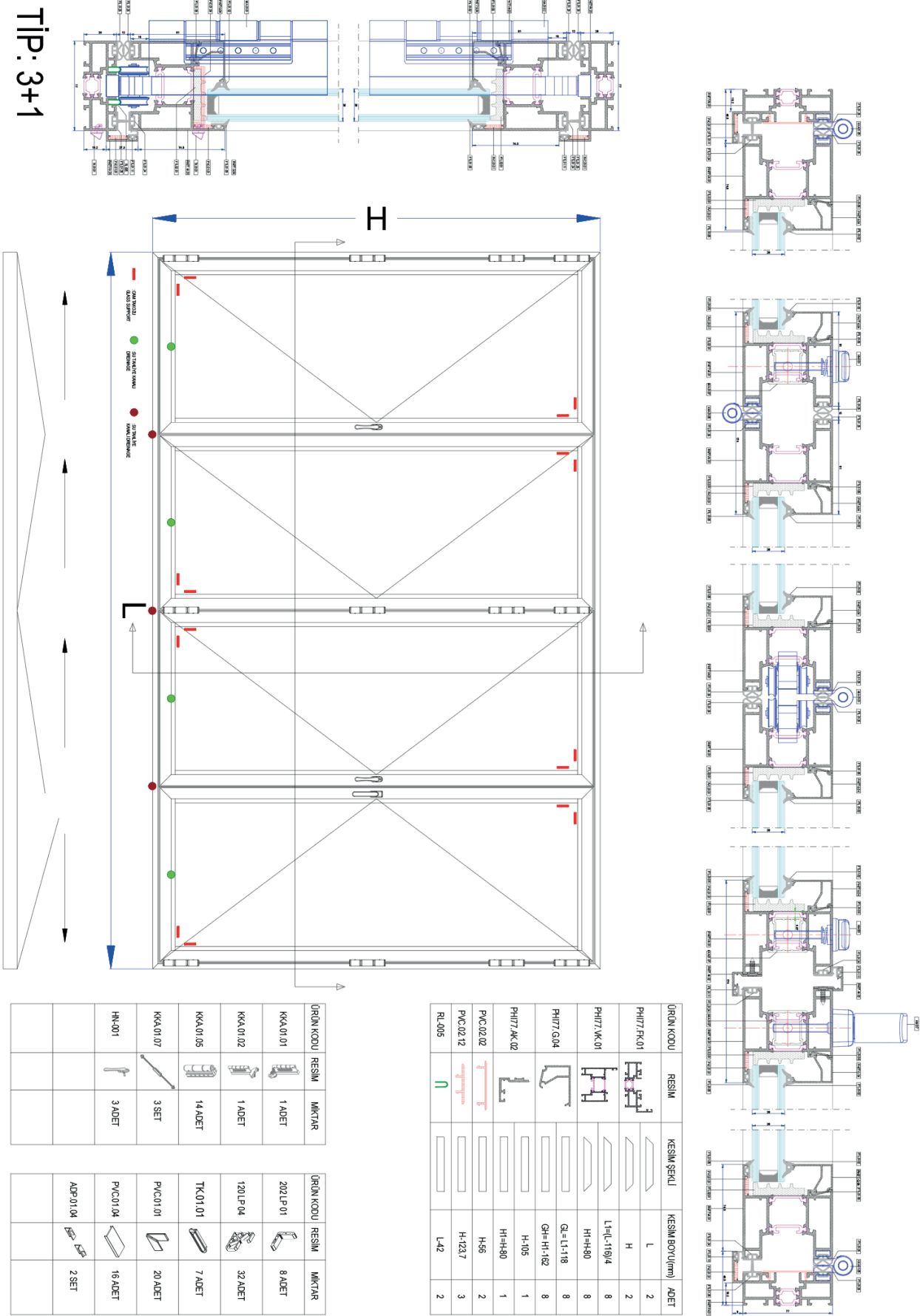
[illegible]












## BI-FOLD SLIDING SYSTEM



ORIGIN (DO)	RESIN	KEAN (S) (U)	KEAN (S) (M)	ASSET
P/RT/101		L	1	2
P/RT/101		H		
P/RT/101		LH (L-100)		
P/RT/101		H+H-100		
P/RT/101				
P/RT/101		GL-118		
P/RT/101		GH-11-182		
P/RT/102		H+H-100		
P/RT/102		H-100		
P/RT/102		H-1237		
R-105		L-12		

## BI-FOLD SLIDING SYSTEM



IGRA/DOA	REGIM	REGIM (SPALL)	REGIM (200mm)	AGE
PH07.5.01		L	L	2
PH07.5.01		H	H	2
PH07.5.01		L1+L1+1964	L1+L1+1964	6
PH07.5.01		H1+H80	H1+H80	6
PH07.0.04		G=1:1:18	G=1:1:18	9
PH07.0.04		G+H1+H2	G+H1+H2	9
PH07.5.02		H-95	H-95	1
PH07.5.02		H1+H80	H1+H80	1
PH07.0.02		H-65	H-65	3
PH07.0.02		H-1237	H-1237	3
PH05		L-62	L-62	2